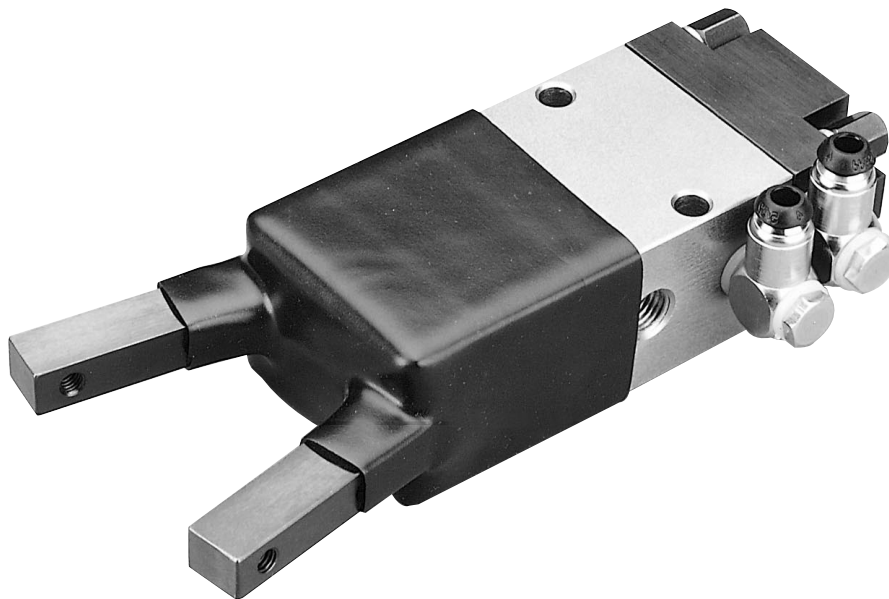


### H2 Series Angular Grippers

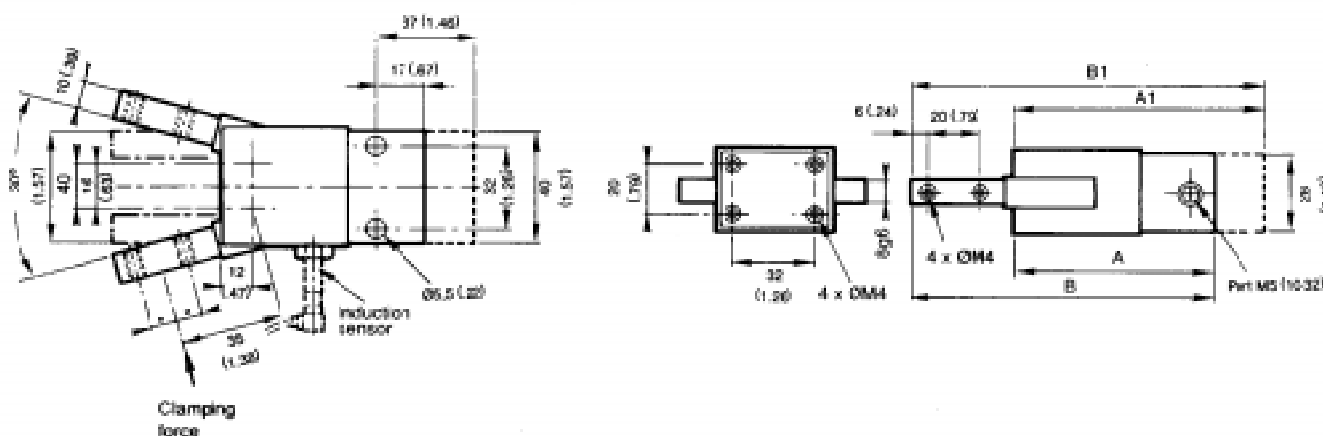
The H2 Series gripper provides extremely high force output for its size. The unique linkage design multiplies the force to the fingers thus achieving a large gripping force. A total jaw movement of 30° is standard. Also standard on the H2 Series is a protective boot that keeps out contamination. The H2 Series is available in single acting, double acting, and double power single acting. PNP or NPN proximity sensors can be added to signal closed position.



#### SPECIFICATIONS

- Maximum operating pressure: 145 psi
- Operating characteristics: single or double acting  
double power single acting
- Gripping force @ 90 psi: 65 to 133 lb
- Maximum breakaway pressure: 29 psi
- Mounting orientation: unrestricted
- Operating temperature range: 32 to 149°F
- Filtration requirement: 40 micron filtered, dry air

Model	Gripping Force @90 psi When Closed	Unit Weight Kg (lb)
3H2S	290N (65 lb)	0.40 (.9)
3H2D	530N (119 lb)	0.53 (1.2)
3H2B	590N (133 lb)	0.53 (1.2)



Type	Part Number	A	A1	B	B1
*Single acting	3H2SN0100-D30	73 (2.87)		112 (4.41)	
*Double acting	3H2DN0100-D30		93 (3.66)		132 (5.20)
*Single acting, double force	3H2BN0100-D30		93 (3.66)		132 (5.20)

<b>3H2</b>	—	<b>*</b>	<b>N010</b>	<b>*</b>	<b>-D30</b>
------------	---	----------	-------------	----------	-------------

**Operating Characteristics**

S - Single acting  
D - Double acting  
B - Double power, single acting

**Proximity Sensors**

O - None  
P - PNP w/ plug-in connector  
N - NPN plugging connector

## Notes

---