

[illegible]

| IND | ECN | /DATE | DATE DEMANDEE . . . | DESCRIPTION DES MODIFICATIONS | DATE | / | / |
|-----|-------------|-------|---|-------------------------------|------|---|---|
| A | PG57038 ST9 | AS71 | PLAN NOUVEAU | | / | / | |
| | AVR 10/09 | | | | / | / | |
| B | PG57038 ST9 | AT63 | EN NOMENCLATURE : | | / | / | |
| | MAI 29/09 | | EVOLUTION DE LA PLANCHE 01 | | / | / | |
| | | | EVOLUTION DE LA PLANCHE 04 | | / | / | |
| | | | EVOLUTION DE LA PLANCHE 05 | | / | / | |
| | | | DANS L'ENSEMBLE 000, SUPPRIMER LE REPERE 123 :ASNA2020-48 | | / | / | |
| | | | DANS L'ENSEMBLE 000, SUPPRIMER LE REPERE 002 :F53913116 000 | | / | / | |
| | | | DANS L'ENSEMBLE 000, SUPPRIMER LE REPERE 003 :F53913116 001 | | / | / | |
| | | | DANS L'ENSEMBLE 000, SUPPRIMER LE REPERE 004 :F53913116 002 | | / | / | |
| | | | DANS L'ENSEMBLE 000, SUPPRIMER LE REPERE 008 :F53916305 000 | | / | / | |
| | | | SUR DESSIN: | | / | / | |
| | | | SUR PLANCHE 01, | | / | / | |
| | | | EN ZONE E1, NOTA REP 123 SUPPRIME | | / | / | |
| | | | VUE DE L'ARRIERE MODIFIEE | | / | / | |
| | | | EN ZONE L5-K4, FLECHES DE SECTION JJ(1-4) SUPPRIMEES | | / | / | |
| | | | EN ZONE I5-I6, FLECHES DE SECTION QQ(1-4) SUPPRIMEES | | / | / | |
| | | | EN ZONE G5, FLECHES DE SECTION SS(1-5) SUPPRIMEES | | / | / | |
| | | | EN ZONE F5, FLECHES DE SECTION TT(1-5) SUPPRIMEES | | / | / | |
| | | | EN ZONE K5, F5-E5, | | / | / | |
| | | | FLECHES DE SECTION KK(1-4) ET SYM. SUPPRIMEES | | / | / | |
| | | | SUR PLANCHE 04, | | / | / | |
| | | | EN ZONE H2, SECTION JJ(1-4) SUPPRIMEE | | / | / | |
| | | | EN ZONE H6, SECTION QQ(1-4) SUPPRIMEE | | / | / | |
| | | | EN ZONE H3, SECTION KK(1-4) SUPPRIMEE | | / | / | |
| | | | EN ZONE K6, SECTION AB-AB SUPPRIMEE | | / | / | |
| | | | EN ZONE C6, SECTION AC-AC SUPPRIMEE | | / | / | |
| | | | EN ZONE C4, SECTION AG-AG SUPPRIMEE | | / | / | |
| | | | EN ZONE C2, SECTION AD-AD SUPPRIMEE | | / | / | |
| | | | EN ZONE H4, SECTION LL(1-4) MODIFIEE | | / | / | |
| | | | SUR PLANCHE 05, | | / | / | |
| | | | EN ZONE G5, SECTION SS(1-5) SUPPRIMEE | | / | / | |
| | | | EN ZONE G4, SECTION TT(1-5) SUPPRIMEE | | / | / | |
| | | | EN ZONE K5, SECTION AH-AH SUPPRIMEE | | / | / | |
| | | | EN ZONE K4, SECTION AJ-AJ SUPPRIMEE | | / | / | |
| | | | EN ZONE K3, SECTION AK-AK SUPPRIMEE | | / | / | |
| | | | EN ZONE H5, SECTION RR(1-5) MODIFIEE | | / | / | |

-----PLAN NO :-----SOL:--PAGE - IND -

: CE DOCUMENT EST LA PROPRIETE D AEROSPATIALE; IL NE PEUT : DESCRIPTION : : :

: ETRE COMMUNIQUE A DES TIERS ET/OU REPRODUIT SANS L AUTO- : U2 F539 27508 : 3 : B :

: RISATION PREALABLE ECRITE D AEROSPATIALE ET SON CONTENU : DES MODIFICATIONS : : :

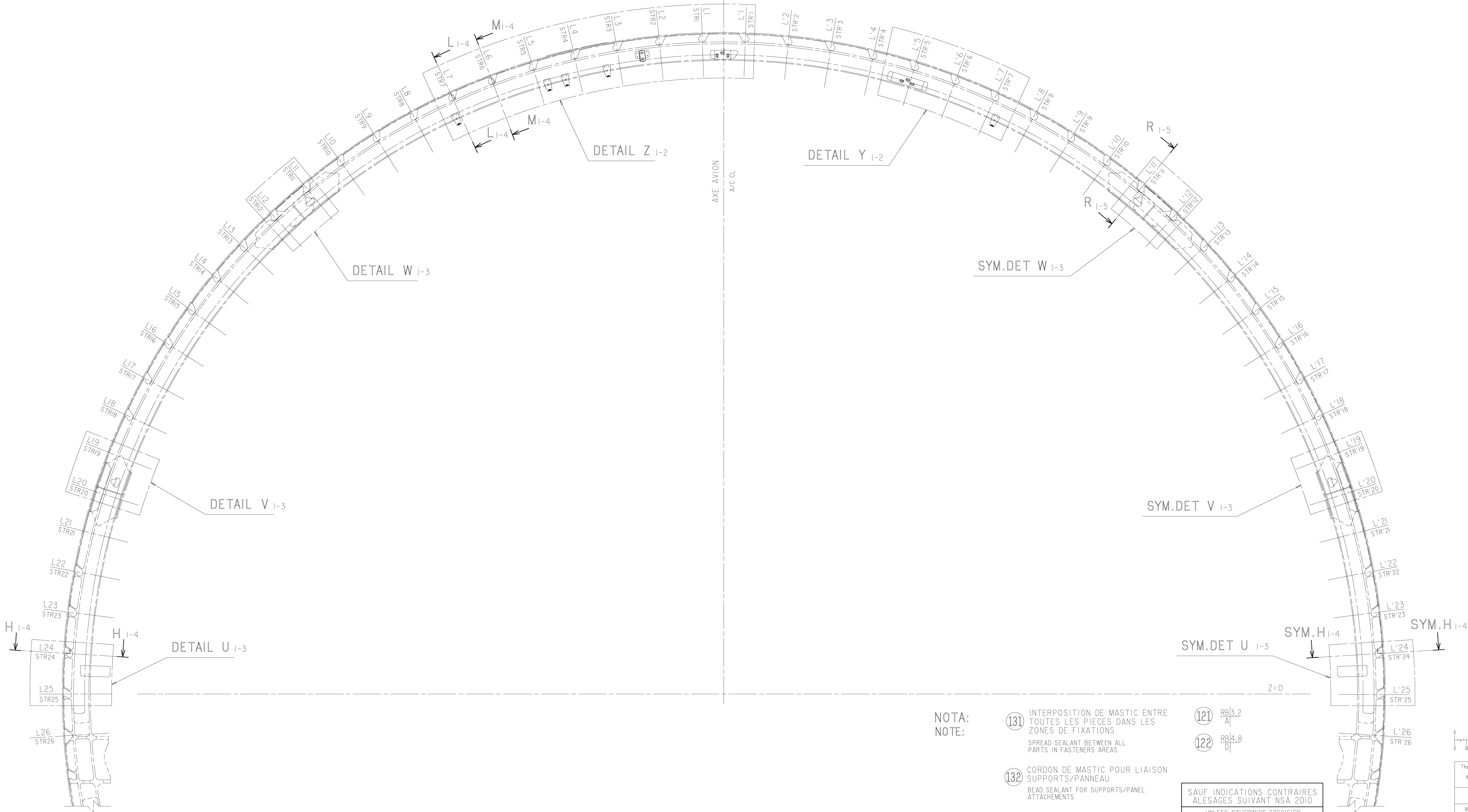
-----NE PEUT ETRE DIVULGUE.-----

DATE : 29 05 2009 FIN

MODIFICATIONS

| | |
|-------|----------------|
| ISSUE | EON: 57038 ST9 |
| A | DRN: DURAND |
| ISSUE | EON: 57038 ST9 |
| B | DRN: LANDREAU |

VUE DE L'ARRIERE
VIEW LOOKING FWD



F539 27508 01 2/2

SHEET 01

FROM 2

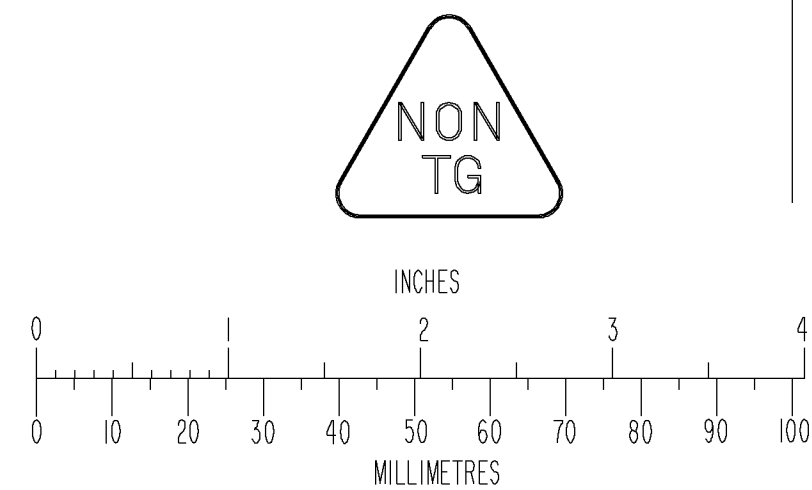
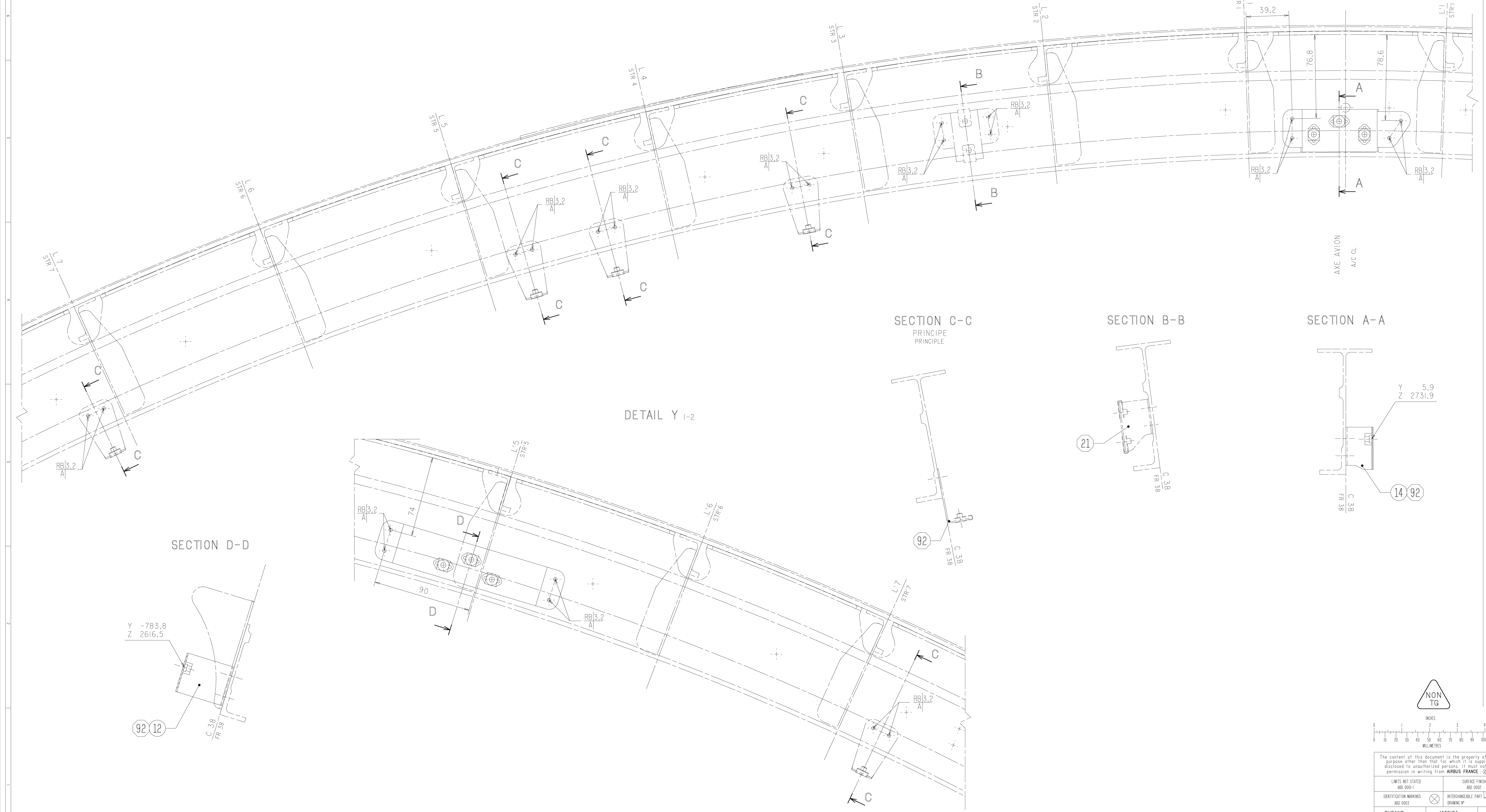
THIS DRAWING HAS BEEN REALIZED BY COMPUTER. ANY MODIFICATION WILL BE MADE ONLY BY CAD MEANS

MODIFICATIONS

ISSUE EON: 57038 ST9

A DRN: DURAND

DETAIL Z 1-2



| | | | |
|--|------------------------------------|---------------------------------------|--|
| The content of this document is the property of AIRBUS FRANCE. It must not be used for any purpose other than that for which it is supplied nor may information contained in it be disclosed to unauthorized persons. It must not be reproduced in whole or in part without permission in writing from AIRBUS FRANCE. © AIRBUS FRANCE 2001. All rights reserved. | | | |
| LIMITS NOT STATED ABD 0001-I | SURFACE FINISH ABD 0002 | AIRBUS France CODE FABRICANT F6198 | |
| IDENTIFICATION MARKINGS ABD 0003 | INTERCHANGEABLE PART DRAWING N° | YES NO | SCALE VALID FOR MASTER DRAWING ONLY 1/1 |
| DRN: DURAND | CHK: VICEIRA | STRESS: ZANDERIGO | DWG SYST: C.T.D. |
| D.O.Orig: 024 | APP: MAYSOUNAVE | WTS: SELLE | PROCESS: TO |
| TITLE: AIRBUS MTG SPRT C38 SUP SPRT INST-FR38 UPR | | PRODUCTION: | SIZE: 1A0 |
| F539 27508 02 2/2 | | U2 F539 27508 | |
| SHEET 02 | | ISSUE A | |

this drawing has been realized by computer. any modification will be made only by CAD means