

# REC TWINPEAK 2 SERIES

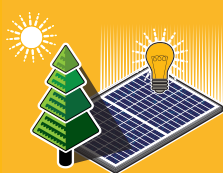
## PREMIUM SOLAR PANELS WITH SUPERIOR PERFORMANCE

REC TwinPeak 2 Series solar panels feature an innovative design with high panel efficiency and power output, enabling customers to get the most out of the space used for the installation.

Combined with industry-leading product quality and the reliability of a strong and established European brand, REC TwinPeak 2 panels are ideal for residential and commercial rooftops worldwide.



**MORE POWER  
OUTPUT PER M<sup>2</sup>**



**IMPROVED PERFORMANCE  
IN SHADED CONDITIONS**

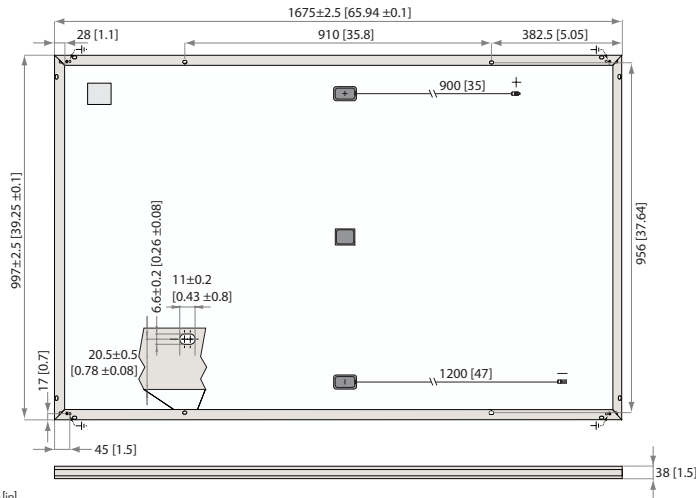


**100%  
PID FREE**



**REDUCES BALANCE OF  
SYSTEM COSTS**

# REC TWINPEAK 2 SERIES



Measurements in mm [in]

## ELECTRICAL DATA @ STC

## Product Code\*: RECxxxTP2

	275	280	285	290	295
Nominal Power - $P_{MPP}$ (Wp)	275	280	285	290	295
Watt Class Sorting - (W)	0/+5	0/+5	0/+5	0/+5	0/+5
Nominal Power Voltage - $V_{MPP}$ (V)	31.5	31.7	31.9	32.1	32.3
Nominal Power Current - $I_{MPP}$ (A)	8.74	8.84	8.95	9.05	9.14
Open Circuit Voltage - $V_{OC}$ (V)	38.2	38.4	38.6	38.8	39.0
Short Circuit Current - $I_{SC}$ (A)	9.30	9.39	9.49	9.58	9.65
Panel Efficiency (%)	16.5	16.8	17.1	17.4	17.7

Values at standard test conditions STC (airmass AM1.5, irradiance 1000 W/m<sup>2</sup>, cell temperature 25°C).

At low irradiance of 200 W/m<sup>2</sup> (AM1.5 and cell temperature 25°C) at least 95% of the STC module efficiency will be achieved.

\*Where xxx indicates the nominal power class ( $P_{MPP}$ ) at STC indicated above, and can be followed by the suffix BLK for black framed modules.

## ELECTRICAL DATA @ NOCT\*

## Product Code\*: RECxxxTP2

	206	210	214	218	223
Nominal Power - $P_{MPP}$ (Wp)	206	210	214	218	223
Nominal Power Voltage - $V_{MPP}$ (V)	29.2	29.4	29.6	29.8	30.0
Nominal Power Current - $I_{MPP}$ (A)	7.07	7.15	7.24	7.32	7.43
Open Circuit Voltage - $V_{OC}$ (V)	35.4	35.6	35.8	36.0	36.2
Short Circuit Current - $I_{SC}$ (A)	7.52	7.59	7.68	7.75	7.85

Nominal operating cell temperature NOCT (800 W/m<sup>2</sup>, AM1.5, windspeed 1 m/s, ambient temperature 20°C).

\*Where xxx indicates the nominal power class ( $P_{MPP}$ ) at STC indicated above, and can be followed by the suffix BLK for black framed modules.

## CERTIFICATIONS



IEC 61215, IEC 61730 & UL 1703, IEC 62804 (PID Free),  
IEC 61701 (Salt Mist Level 6), IEC 62716 (Ammonia Resistance),  
ISO 11925-2 (Ignitability Class E), UNI 8457/9174 (Class I),  
ISO 9001:2015, ISO 14001, OHSAS 18001

**take way**  
for an easy way

take-e-way WEEE Compliant  
Recycling scheme

## WARRANTY

10 year product warranty  
25 year linear power output warranty  
(max. degradation in performance of 0.7% p.a.  
from 97% after the first year)

See warranty conditions for further details.

17.7% EFFICIENCY

10 YEAR PRODUCT WARRANTY

25 YEAR LINEAR POWER OUTPUT WARRANTY

## TEMPERATURE RATINGS

Nominal operating cell temperature (NOCT)	44.6°C (±2°C)
Temperature coefficient of $P_{MPP}$	-0.36 %/°C
Temperature coefficient of $V_{OC}$	-0.30 %/°C
Temperature coefficient of $I_{SC}$	0.066 %/°C

## GENERAL DATA

Cell type:	120 REC HC multicrystalline 6 strings of 20 cells
Glass:	3.2 mm solar glass with anti-reflective surface treatment
Back sheet:	Highly resistant polyester polyolefin construction
Frame:	Anodized aluminum (available in silver or black)
Junction box:	IP67 rated, 3-part with 3 bypass diodes 4 mm <sup>2</sup> solar cable, 0.9 m + 1.2 m
Connectors:	Stäubli MC4 PV-KBT4/PV-KST4 (4 mm <sup>2</sup> ) Tonglin TL-Cable01SFR (4 mm <sup>2</sup> ) *Dependent on product type

## MAXIMUM RATINGS

Operational temperature:	-40 ... +85°C
Maximum system voltage:	1000 V
Maximum snow load:	550 kg/m <sup>2</sup> (5400 Pa)
Maximum wind load:	244 kg/m <sup>2</sup> (2400 Pa)
Max series fuse rating:	25 A
Max reverse current:	25 A

## MECHANICAL DATA

Dimensions:	1675 x 997 x 38 mm
Area:	1.67 m <sup>2</sup>
Weight:	18.5 kg

**Note!** Specifications subject to change without notice.

Founded in Norway in 1996, REC is a leading vertically integrated solar energy company. Through integrated manufacturing from silicon to wafers, cells, high-quality panels and extending to solar solutions, REC provides the world with a reliable source of clean energy. REC's renowned product quality is supported by the lowest warranty claims rate in the industry. REC is a Bluestar Elkem company with headquarters in Norway and operational headquarters in Singapore. REC employs more than 2,000 people worldwide, producing 1.4 GW of solar panels annually.



www.recgroup.com