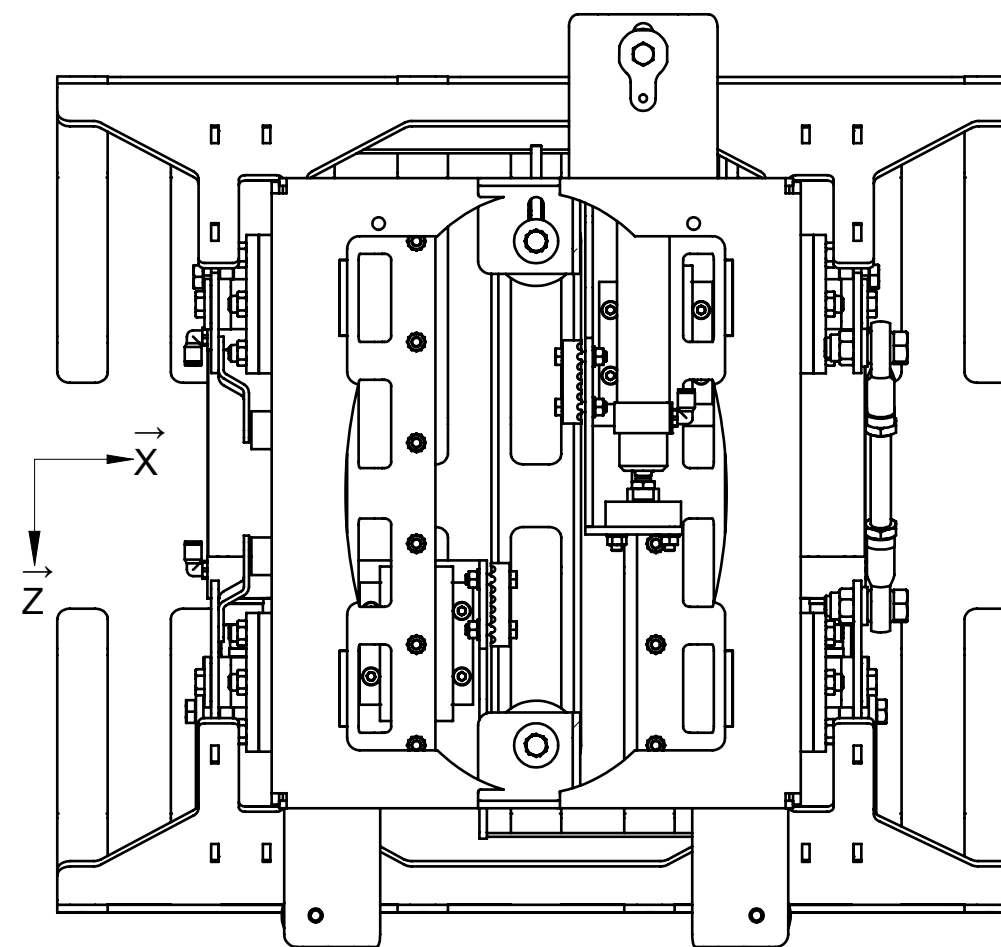
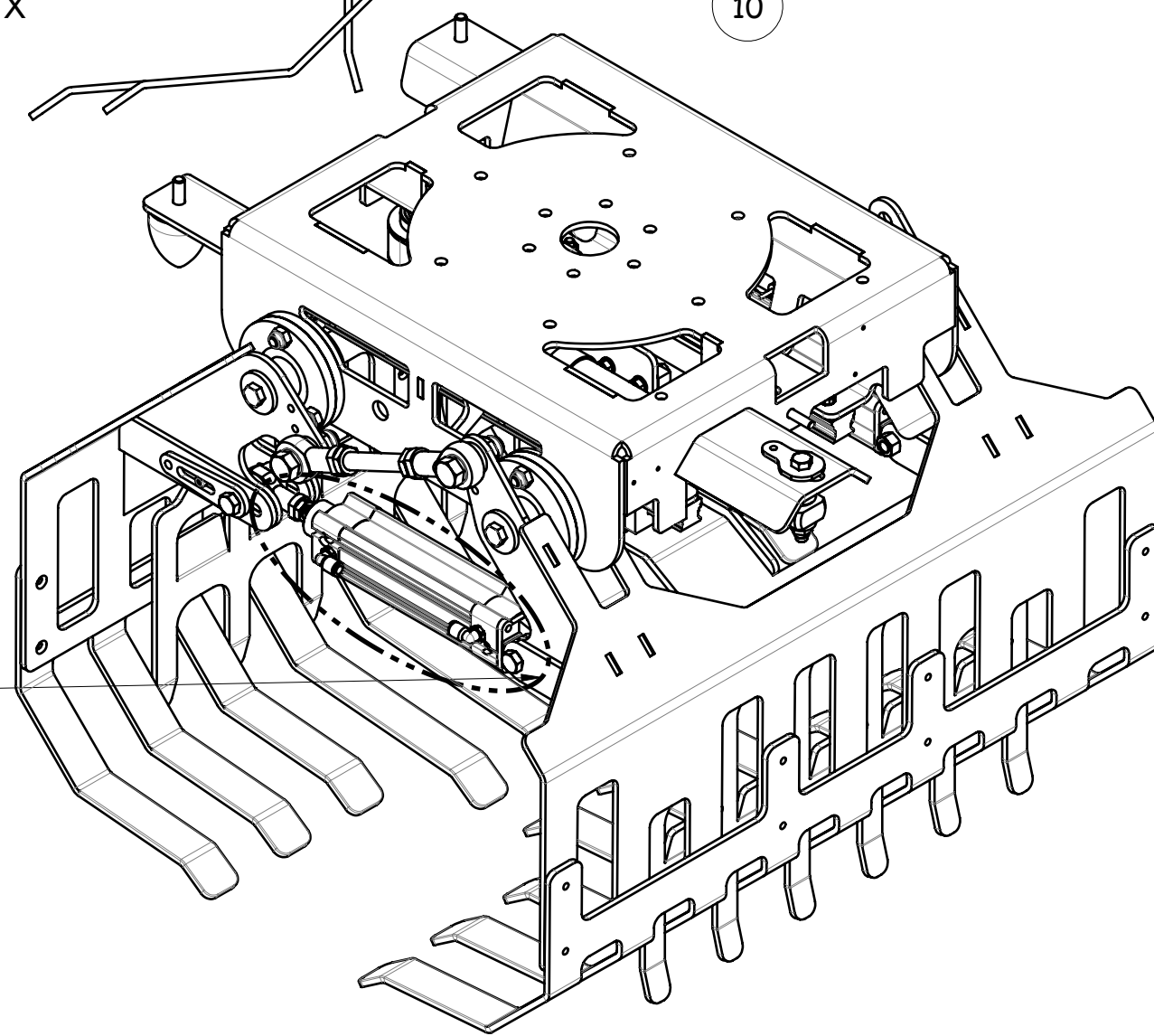
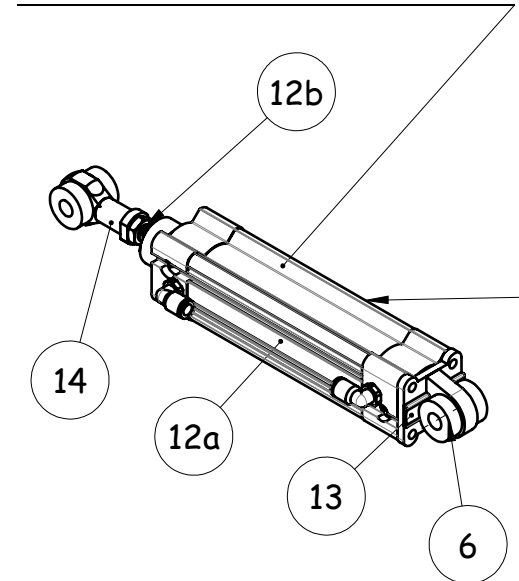


Vérin de maintien double effet  
Diam: 40mm - Course: 125mm



Code : 1606-MEI ST 11

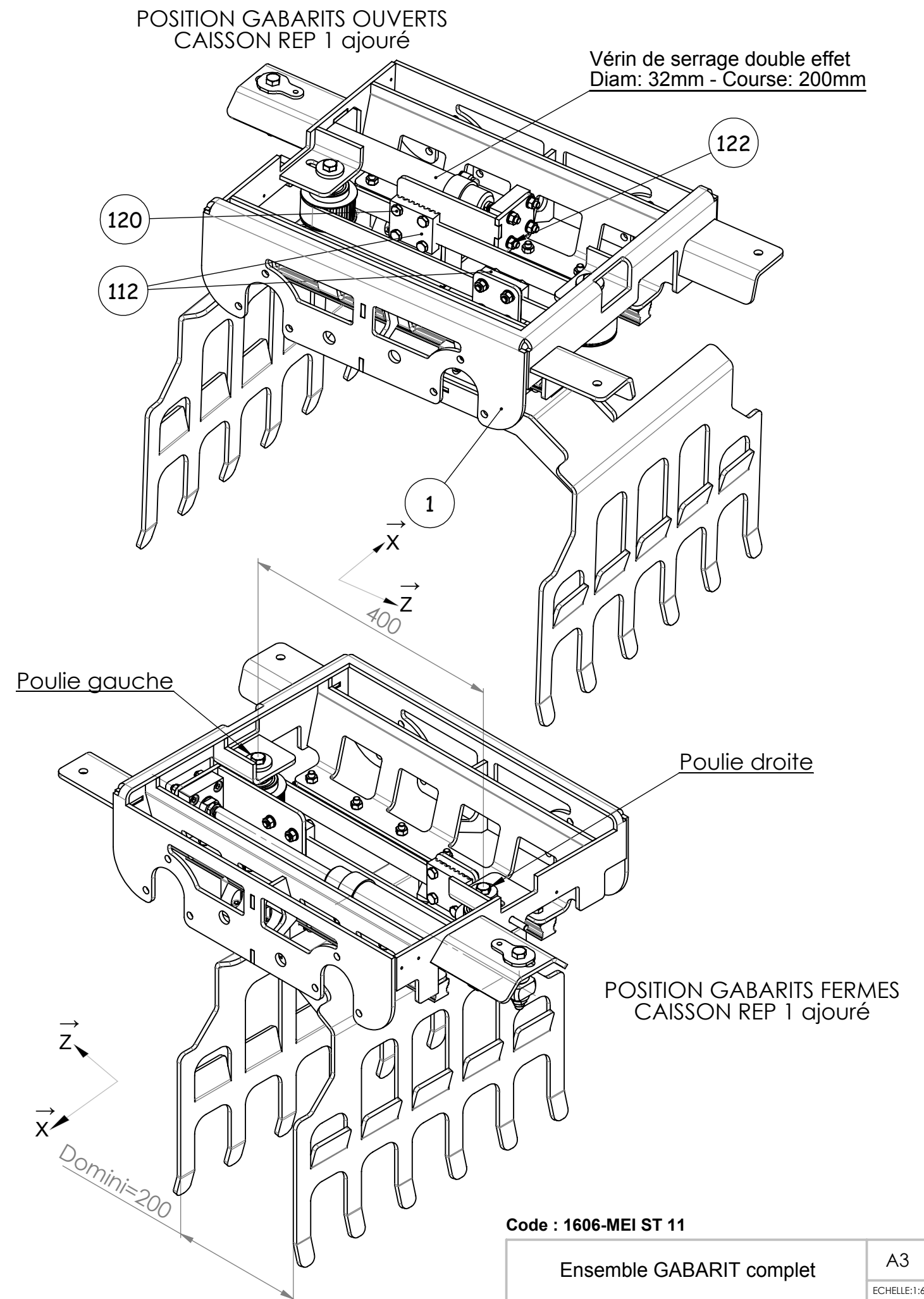
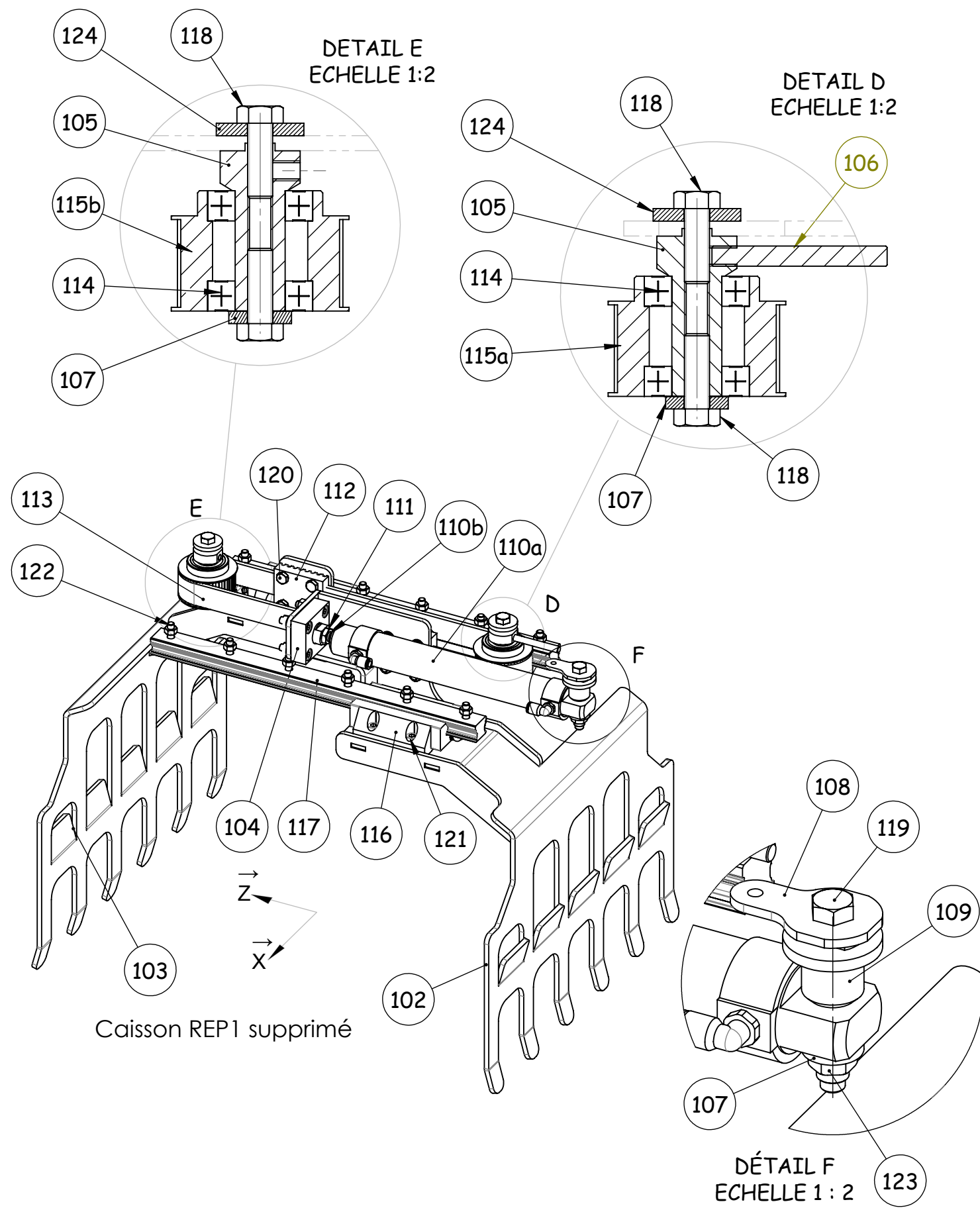
Tête à griffes avec chariot

A3

ECHELLE:1:6

BAC PRO MEI - E11 -

DTR 8/10



Code : 1606-MEI ST 11

Ensemble GABARIT complet

A3

ECHELLE:1:6

BAC PRO MEI - E11 -

DTR 9/10